



NOTICE OF RACE

2013 NS14 NEW SOUTH WALES CHAMPIONSHIP

29th March 2013 – 1st April 2013

GOSFORD SAILING CLUB

1 VENUE & ORGANISING AUTHORITY

The Organising Authority is Gosford Sailing Club, which is located at Masons Pde, Gosford, 2250 New South Wales.

2 RULES

2.1 The Series will be governed by the rules as defined by The Racing Rules of Sailing (RRS).

2.2 The prescriptions of Yachting Australia will apply.

2.1 Under Rule 87 the NS14 Class Rules are amended as follows to allow registered MG14 class boats whose crew satisfies the eligibility criteria in 4.1 in the Notice of Race to participate:

The MG14 must meet the NS14 Class Measurement Rules with the following allowances granted under the NS14 Constitution:

11.3.2 A fixed bowsprit stub projecting less than 60mm beyond the normal measurement length is permitted. Any pointed or sharp protuberances must be safely capped accordingly.

11.6.5 The mainsail shall be capable of being lowered from sailing position from within the boat afloat and upright.

11.6.6 If the "MG" class insignia is present on the mainsail, the NS14 Class insignia shall be affixed to the opposite side of the sail (i.e. port side uppermost). The sail number must be unique.

3 ADVERTISING

Advertising will be restricted to the requirement of ISAF Regulation 20

Competitors may be required to display Event sponsor's name(s)/logo(s). If required, the Organising Authority will supply these items and they shall be affixed and/or worn as prescribed in the Sailing Instructions.

4 ELIGIBILITY AND ENTRY

4.1 No boat may score points unless:

a) the boat is sailed by a crew of two persons, both people being financial members of a club affiliated with Yachting Australia or any of its members for the 2012/2013 season

b) at least one member of the crew is a financial member, approved by the Management Committee of the NSW NS14 Association of NSW Inc, of a State or Territory NS14 Association for the 2012/2013 season; and

c) the remaining crew, if not a member as defined in 4.1b above, is an associate member approved by the Management Committee of the NSW NS14 Association of NSW Inc for the 2012/2013 season.

d) Crews, who must fulfil the requirements of 4.1b or 4.1c above, may only be substituted with the written approval of the Race Committee.

4.2 Entries must be completed online, accompanied by the prescribed entry fee, no later than 15th March 2012. <http://www.nsw.yachting.org.au/event.asp?ID=52961&format=popup>

Late entries will be accepted up until the 29th March. Late entries may not receive any promotional material or shirts. No entries will be accepted after this date without prior approval of Race Secretary.

5 FEES

The entry fee for the Championship is \$155 entries received after the 15th of March will be \$185.

6 SCHEDULE OF EVENTS

6.1 Registration

Entrants must register with the Race Secretary at Race Headquarters on Friday 29th March 2013 between 10:00 and 12:00 hours.

Skipper and crew must attend registration.

All entrants must ensure that they have fully completed their entry (including the Sail sizes and Sail measurement dates) prior to registration day.

Any missing details must be with the Race secretary by no later than Wednesday 27th March 2013.

No sail can be declared on the morning of registration without prior approval of the Race Secretary /Race Committee.

All entrants must complete a safety checklist before coming to registration.

Confirmation that boats are using sails declared on their entry form and check weighing of hulls may occur at time of registration or at any time during the regatta.

Crews wanting to enter divisions will need evidence of age and scales will be provided for weigh in for heavy weight division.

6.2 Entrants' Briefings

A Championship briefing will be held at 1230 hours on Friday 29th March 2013 at race headquarters.

Skipper and crew are required to attend this briefing.

Further briefings may be held each day of racing at 0900 hours. All briefings will be held at race headquarters.

6.3 Race Programme

Date	Heat	Earliest Start Time	Latest Start Time
Friday 29 th March 2013	Race day 1	1400 hrs	
Saturday 30 th March '13	Race day 2	1030 hrs	
Sunday 31 st March '13	Race day 3	1030 hrs	
Monday 1 st April 2013	Race day 4	1030 hrs	1500 hrs

a) Races may be sailed back-to-back, with a short delay between them.

b) Resails will be scheduled at the discretion of the Race Committee. If a heat is abandoned, it may be rescheduled as a heat to be sailed back to back following a programmed heat.

7 EQUIPMENT AND MEASUREMENT

Only one set of spars and foils can be declared for use in the Championship. 2 jibs and 1 mainsail can be declared for use in the Championship. Measurement forms for all declared sails and spars must be in the hands of the appropriate State or Territory Association Measurer by the close of registration.

All boats must conform to the NS14 class rules to be eligible to score points in the

Championship.

Replacement of individual sails, spars and foils which are damaged may be permitted only with the written approval of the Race Committee.

Competing boats shall be available for inspection or measurement by the NSW Measurer or his representative at any time during the Championship. Boats may be weighed.

8 SAILING INSTRUCTIONS

Sailing Instructions will be available at race headquarters from 10:00 hours on Friday 29th March 2013.

9 VENUE

The primary racing area will be on the waters of Brisbane waters. The approximate racing area is illustrated in Figure 1.

The rigging area is the grass area and beach surrounding the club. Race headquarters will be at GSC. Limited security will be available over boats stored overnight on the grass area close to the club on Friday, Saturday and Sunday nights.

10 DIVISIONS

There may be a gold and silver fleet, the silver fleet may do a shorter course.

11 SCORING

11.1 A maximum of six (6) races to be sailed and three (3) races are required to be completed to constitute a series.

11.2 If only three (3) or four (4) races are completed, each boat's series score shall be the total of her races scores without discard. If five (5) or six (6) races are completed her worst single score will be discarded.

11.3 A Handicap scoring will be maintained for the Championship.

An initial handicap estimate will be made for each boat based on previous Championship/Series results and or club performance.

If a handicap cannot be determined for a boat from history then an initial handicap will be determined based on the boats first 3 races, or a number to be determined by the Race Committee.

12 SAFETY REGULATIONS

The attention of all entrants is drawn to Yachting Australia Special Regulations Part 2 which shall apply.

13 PRIZES

A Presentation of Trophies will be held at the GSC at the conclusion on racing on 1st April 2013. Prizes to be awarded as follows:

1st, 2nd & 3rd Place Scratch

1st, 2nd & 3rd Place Handicap

Female Skipper (best female skipper on scratch)

Junior Skipper (best skipper aged under 19 years on scratch)

Classic Division (Aero 9 or equivalent and prior)

Silver fleet .

Further scratch and handicap prizes may be issued, dependent on the number of entrants in the Championship. Female Skipper and Junior Skipper are also eligible for overall Scratch prizes

Category prizes to be awarded include:

Heavyweight (Combined crew weight of over 140kgs)

Jack & Jill (male/female crew)

Veteran Skipper (aged over 50 years)

Family Crew (family crew)

Husband & Wife Crew (husband/wife crew)

It should be noted that Scratch prize winners will not be eligible for Handicap prizes and Category prizes will not be awarded to Scratch or Handicap prize winners.

14 INSURANCE

Each participating boat shall be insured with a valid third-party liability insurance cover of not less than \$10 million per event or equivalent. All owners/entrants who sign the entry form are deemed to have made a declaration that they hold such cover.

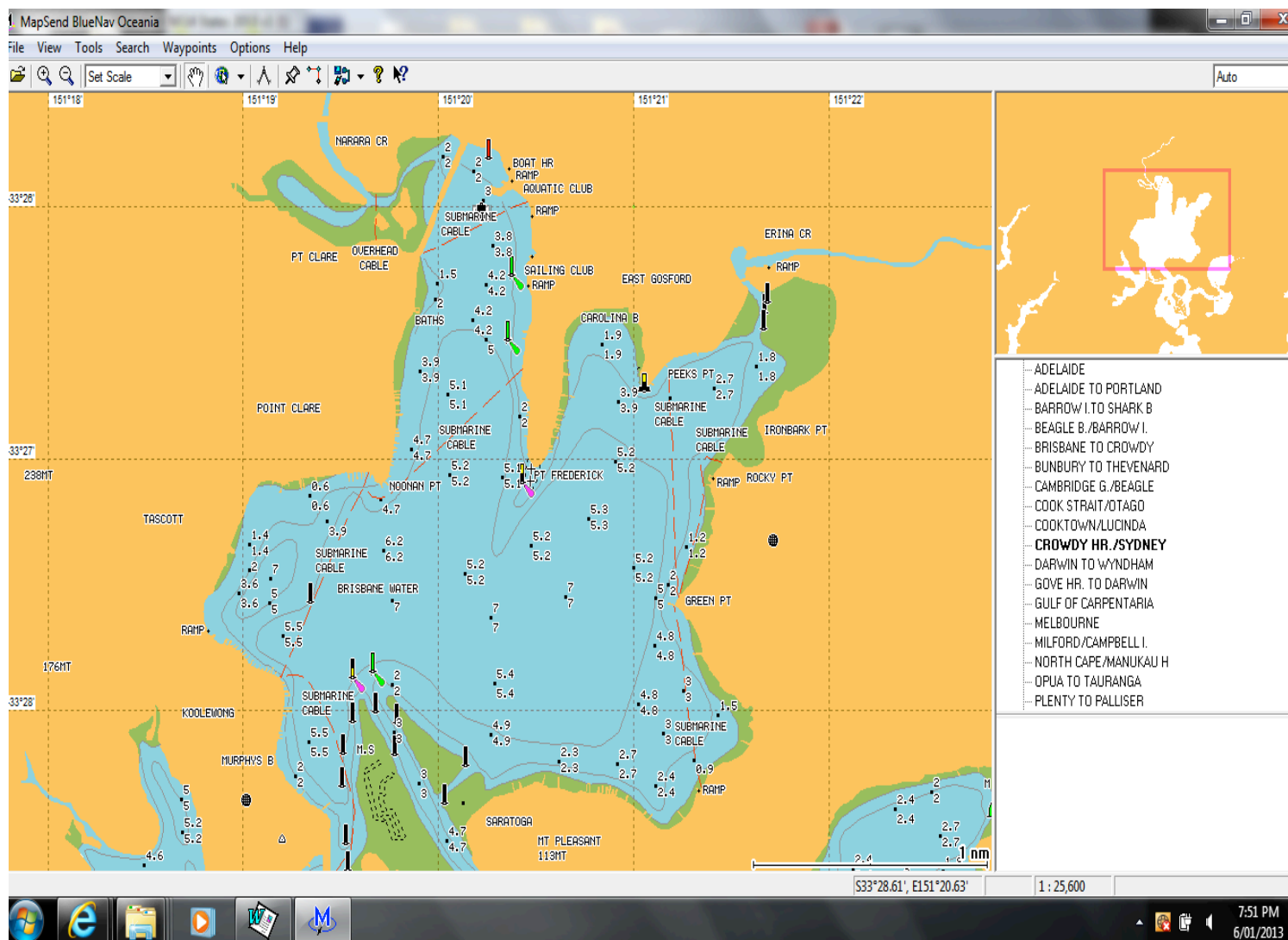
15 DISCLAIMER OF LIABILITY

Competitors participate in the regatta entirely at their own risk. See rule 4, Decision to Race. The organising authority and the NS14 Association of NSW Inc. will not accept any liability for material damage or personal injury or death sustained in conjunction with or prior to, during, or after the regatta.

16 FURTHER INFORMATION

For further information, please email nsracesec@hotmail.com

FIGURE 1



Approximate Racing Area

OTHER INFORMATION

Social

A casual welcome evening will be held at GSC on Friday 29th March 2013 after sailing.

A Championship presentation dinner will be held on Saturday 30th March 2013 at GSC. Tickets must be prepaid and remitted with the competitor entry form. Tickets will be issued at registration. A presentation of trophies for the Travellers Trophy, Metropolitan Trophy, Sprint Series and Three Rivers Championship will also be held at this dinner.

Entrants need to complete a separate social information form and forward with the entry form.

Annual General Meeting

The Annual General Meeting of the NS14 Association of NSW Inc. will be held at GSC during



the regatta. It is planned to occur as soon as possible after racing on 31st March 2013.

If there is a lengthy postponement of racing during the regatta, then the meeting will be held during that time. Start time of the meeting will be placed on the notice board at least one hour prior to the start of the meeting. All sailors are requested to attend this meeting.

17 Accommodation

There are a number of motels in Gosford, but please book early, since they are frequently booked for functions. These are relatively close to the Gosford Sailing Club:

Hotel Formula - 02 43257692 Gosford Palms Motor Inn -02 4323-1211

Galaxy Motel -02 4323-1711 Gosford Best Western Motel -02 4323-1333

Hotel Gosford - 024324-1634 Quality Inn (The Willows) -02 4328-4666